

MAGO 4

Antiphospholipid syndrome



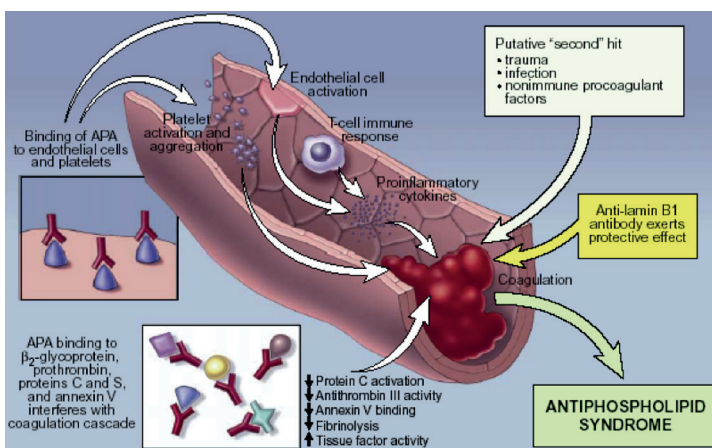
- Automated processing of ELISA and IFA tests simultaneously in one batch
- 104 samples, barcodes, disposable tips
- Up to 12 ELISA or 16 IFA tests in one batch
- Wide range of ELISA tests
- MAGO 4 pre-programmed test procedures

Antiphospholipid syndrome

Antiphospholipid syndrome

I-833	Anti-Annexin V	96 tests
	Test with recombinant antigens for the IgG or IgM anti-Annexin V Abs	
720-400	Is® anti-Cardiolipin IgG/IgM	96 tests
	Test for the IgG or IgM anti-Cardiolipin Abs	
720-420	Is® anti-Cardiolipin IgA	96 tests
	Test for the IgA anti-Cardiolipin Abs	
720-480	Is® anti-Cardiolipin Screen	96 tests
	Screening test (IgG, IgM, IgA) for the anti-Cardiolipin Abs	
720-830	Is® anti-β-2-Glycoprotein IgG/IgM	96 tests
	Test for the IgG or IgM anti-β2 Glicoprotein I	
CA-201	anti-β-2-Glycoprotein IgA	96 tests
	Screening for the IgA anti-β2 Glicoprotein I	
PL-100	Phospholipid Screen	96 tests
	Screening test for the IgG or IgM anti-Phospholipid antibodies	
CA-208	Thrombo-Combo	96 tests
	Profile test for the anti-IgG or IgM anti-Phospholipides	
CA-202	Anti-Phosphatidyl Serine	96 tests
	Test for the IgG or IgM anti-Phosphatidyl Serine Abs	
CA-204	Anti-Phosphatidyl Inositol	96 tests
	Test for the IgG or IgM anti-Phosphatidyl Inositol Abs	
CA-206	Anti-Phosphatidic Acid	96 tests
	Test for the IgG or IgM anti-Phosphatidic Acid Abs	
CA-210	Anti-Prothrombin Screen	96 tests
	Screening test (IgG, IgM, IgA) for the anti-Prothrombin Abs	
CA-212	Anti-Prothrombin IgG/IgM	96 tests
	Test for the IgG or IgM anti-Prothrombin Abs	
CA-214	Anti-Prothrombin IgA	96 tests
	Test for the IgA anti-Prothrombin Abs	

Complete list of products in Delta Biologicals catalogue.



Specifications are subject to change without prior notice.
Pictures used only for representation purposes - subject to change without prior notice.

Erba Lachema s.r.o.
Karásek 2219/1d, 621 00 Brno, Czech Republic
Tel.: +420 517 077 111
E-mail: diagnostics@erbamannheim.com
www.eralachema.com



Contact info / map

MAGO420180901EN